



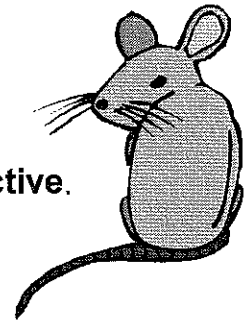
# Adjectives 2

When we compare two nouns we use a comparative adjective.

For example: A mouse is fast but a rabbit is **faster**.

When we compare three or more nouns we use a superlative adjective.

For example: A cheetah is the **fastest** of all animals.



Complete the table below putting in the missing adjectives.

Adjective	Comparative	Superlative
fast	faster	.....
slow	.....	slowest
soft	softer	.....
hard	.....	hardest
light	lighter	.....
dark	.....	darkest
large	larger	.....
small	.....	smallest
big	bigger	.....
wide	.....	widest
high	higher	.....
low	.....	lowest
wet	wetter	.....
dry	.....	driest

Write ten sentences using the adjectives in the table above.

When we add a suffix to words ending in y we generally have to **change the y to i**. Add **er** or **est** to the following words to make them into comparative or superlative adjectives.

lucky

noisy

busy

pretty

muddy

Write a sentence for each of the new words you have just made.